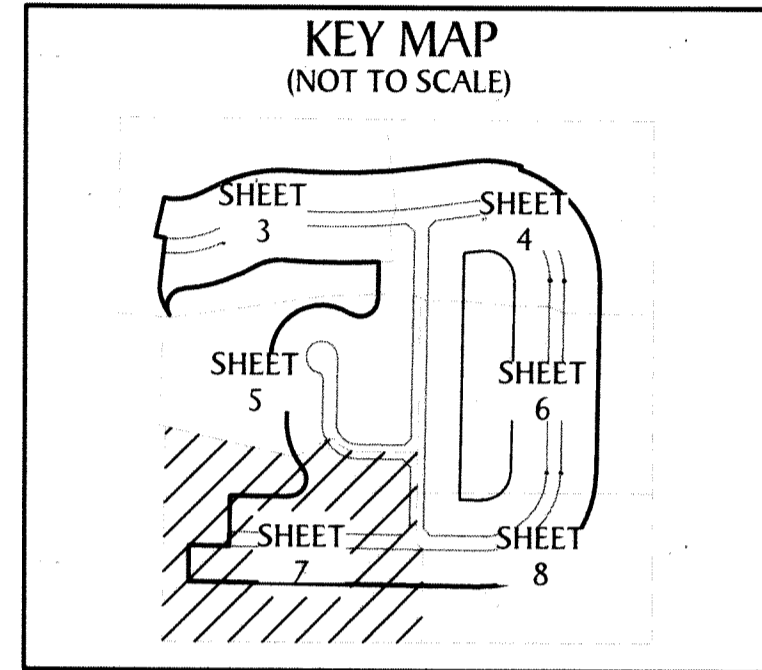
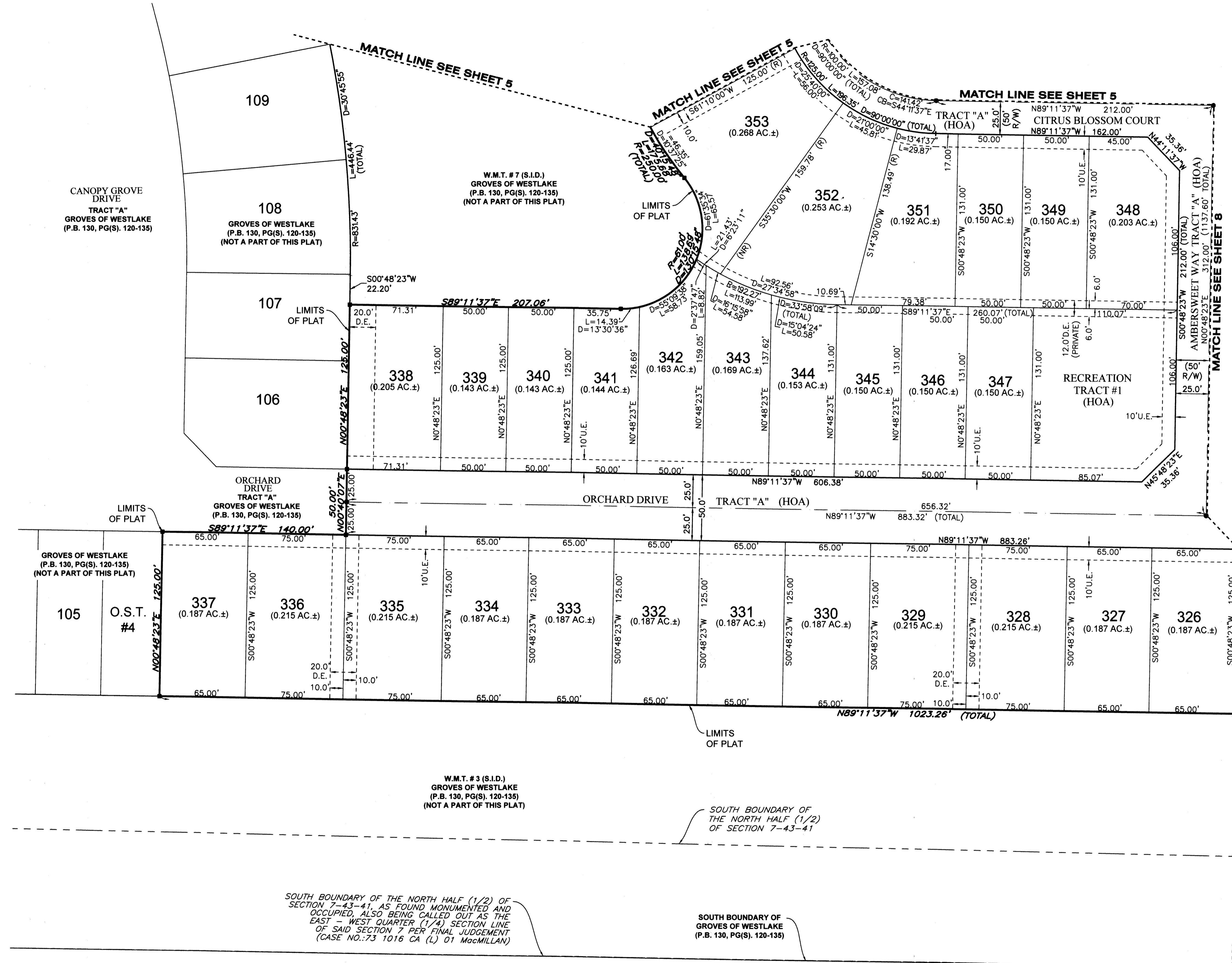
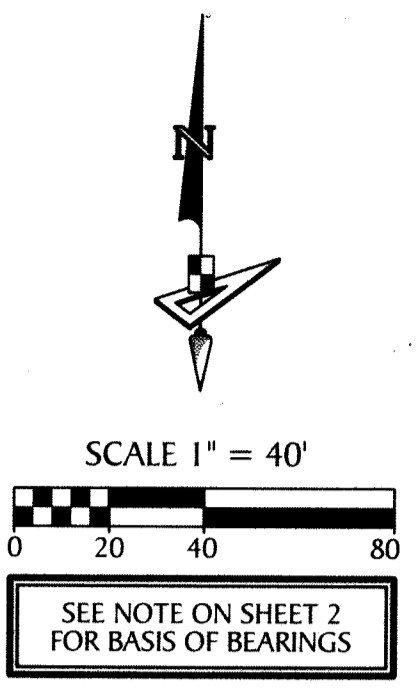


GROVES OF WESTLAKE - PHASE II

A SUBDIVISION IN SECTION 7, TOWNSHIP 43 SOUTH, RANGE 41 EAST, CITY OF WESTLAKE, PALM BEACH COUNTY, FLORIDA, BEING A REPLAT OF TRACT "O", GROVES OF WESTLAKE - PHASE I, PLAT BOOK 130, PAGES 120 THROUGH 135, INCLUSIVE, PUBLIC RECORDS OF PALM BEACH COUNTY, FLORIDA.

45



- LEGEND**
- P.O.B. ----- POINT OF BEGINNING
 - P.O.C. ----- POINT OF COMMENCEMENT
 - P.B. ----- PLAT BOOK
 - D.B. ----- DEED BOOK
 - PG./PG(S) ----- PAGE(S)
 - NAD ----- NORTH AMERICAN DATUM
 - W.M.T. ----- WATER MANAGEMENT TRACT
 - O.S.T. ----- OPEN SPACE TRACT
 - P.B.C. ----- PALM BEACH COUNTY
 - U.E. ----- UTILITY EASEMENT
 - D.E. ----- DRAINAGE EASEMENT
 - L.M.A.E. ----- LAKE MAINTENANCE ACCESS EASEMENT
 - 7-43-41 ----- SECTION-TOWNSHIP-RANGE
 - R ----- RADIUS
 - L ----- ARC LENGTH
 - D ----- DELTA ANGLE
 - CB ----- CHORD BEARING
 - C ----- CHORD
 - R/W ----- RIGHT-OF-WAY
 - (R) ----- RADIAL
 - (NR) ----- NON-RADIAL
 - HOA ----- HOMEOWNERS ASSOCIATION
 - S.I.D. ----- SEMINOLE IMPROVEMENT DISTRICT
 - PRM ----- PERMANENT REFERENCE MONUMENT
 - ----- PERMANENT CONTROL POINT
 - ----- FOUND PERMANENT REFERENCE MONUMENT
 - ----- SET 4"x4" CONCRETE MONUMENT WITH 2" ALUMINUM DISK STAMPED "PRM LB 7768"

SOUTH BOUNDARY OF THE NORTH HALF (1/2) OF SECTION 7-43-41, AS FOUND MONUMENTED AND OCCUPIED, ALSO BEING CALLED OUT AS THE EAST - WEST QUARTER (1/4) SECTION LINE OF SAID SECTION 7 PER FINAL JUDGEMENT (CASE NO.: 73 1016 CA (L) 01 MacMILLAN)

SOUTH BOUNDARY OF GROVES OF WESTLAKE (P.B. 130, PG(S). 120-135)